
Kingston 36 R/V



MetalCraft Marine

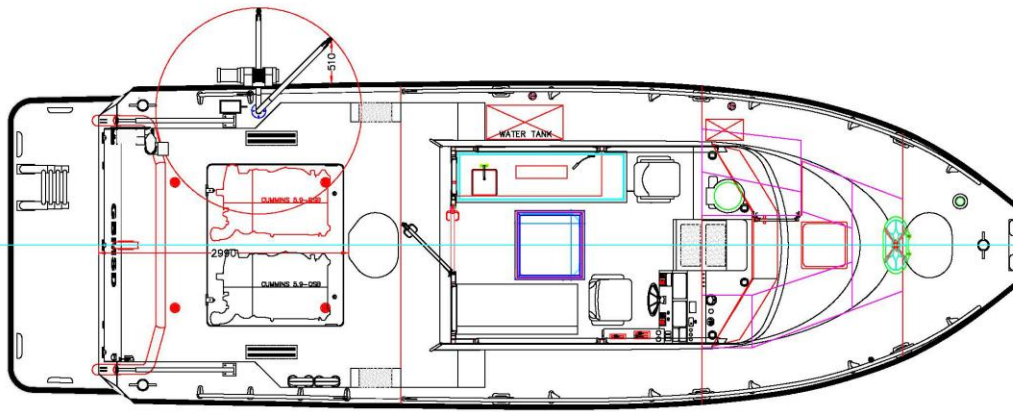
INCORPORATED

Builders of High Speed, Fire/Rescue, Patrol and Workboats

Metal Craft Marine believes that with the right input from our customers, we can build the 'perfect boat' ... and we stand behind it with our 10 year hull seam warranty.

www.metalcraftmarine.com

Kingston 36 R/V



Specification	
L.O.A.	40'11"
B.O.A.	13'0"
Draft	20"
Displacement	22,500 lbs.
Max Speed	37 knots
Cruising Speed	30 knots
Propulsion	
Engine	Twin Cummins QSB5.9
Drive	Twin Hamilton-Jet HJ292
Electronics	
Navigation	Furuno Nav Net: GPS; Radar; Depth Sounder
Instruments	Furuno RD30: Depth; Speed; Temperature
Weather Station	Furuno PB150
Communications	Icom IC-M504, IC-304
Loudhailer	Raymarine Ray 430
Features	
Generator	9.0 kW Cummins Onan Generator
Inverter	3000 W
Davit	450 lb port side sample davit w/ 12V winch
A Frame	2,000 lb stern mounted A Frame w/110V winch
Transom	Oversized recover platform w/ tail gate
Laboratory	Stainless steel work station w/ potable water sink and specimen refrigerator
Accommodations	
Cabin	Helm station; Comm/Nav station & bench seat
Cuddy	V Birth w/ head

Bay Guardian designed and built by MetalCraft Marine US Inc. owned by the Green Bay Metropolitan Sewerage District

MetalCraft Marine

INCORPORATED

583 Broadway St. E, Cape Vincent New York 13618 ♦ 347 Wellington Street Kingston Ontario K7K 6N7
www.metalcraftmarine.com
 (800) 410-8464